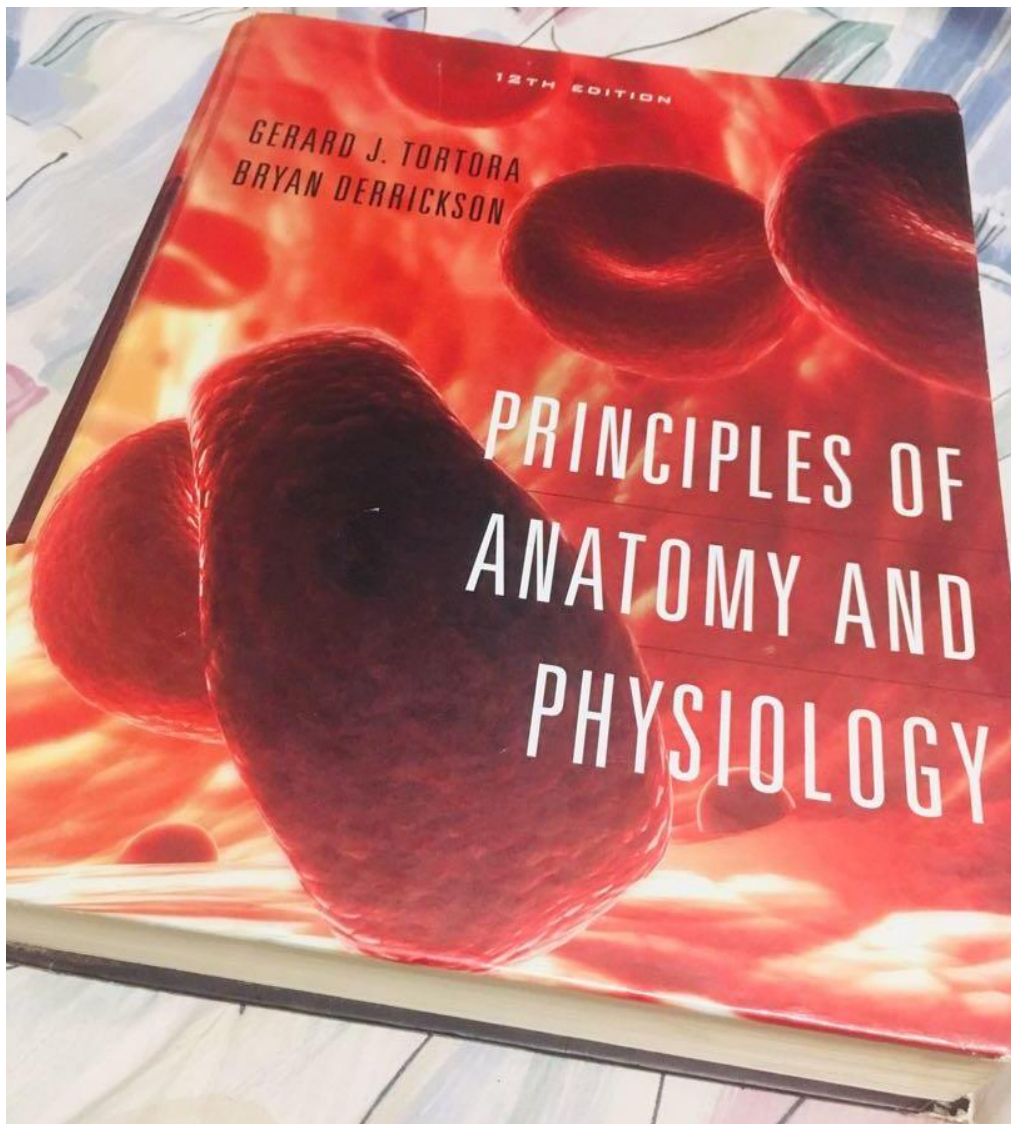


# TEST BANK

**FOR PRINCIPLES OF ANATOMY AND PHYSIOLOGY, 12TH EDITION, BY GERALD TORTORA & BRYAN DERRICKSON**



---

**Contents:**

Chapter 1 An Introduction To The Human Body
Chapter 2 The Chemical Level Of Organization
Chapter 3 The Cellular Level Of Organization
Chapter 4 The Tissue Level Of Organization
Chapter 5 The Integumentary System
Chapter 6 The Skeletal System: Bone Tissue
Chapter 7 The Skeletal System: The Axial Skeleton
Chapter 8 The Skeletal System: The Appendicular Skeleton
Chapter 9 Joints
Chapter 10 Muscular Tissue
Chapter 11 The Muscular System
Chapter 12 Nervous Tissue
Chapter 13 The Spinal Cord And Spinal Nerves
Chapter 14 The Brain And Cranial Nerves
Chapter 15 The Autonomic Nervous System
Chapter 16 Sensory, Motor, And Integrative Systems
Chapter 17 The Special Senses
Chapter 18 The Endocrine System
Chapter 19 The Cardiovascular System: The Blood
Chapter 20 The Cardiovascular System: The Heart
Chapter 21 The Cardiovascular System: Blood Vessels And Hemodynamics
Chapter 22 The Lymphatic System And Immunity
Chapter 23 The Respiratory System
Chapter 24 The Digestive System
Chapter 25 Metabolism And Nutrition
Chapter 26 The Urinary System
Chapter 27 Fluid, Electrolyte, And Acid-Base Homeostasis
Chapter 28 The Reproductive Systems
Chapter 29 Development And Inheritance

---

## Testbank Chapter 1. An Introduction to the Human Body

### Multiple Choice

1. This is the study of the functions of body structures.

- a. Anatomy
- b. Physiology
- c. Dissection
- d. Histology
- e. Immunology

Ans: B

Difficulty: easy

Feedback: 1.1

2. This is defined as a group of cells with similar structure and function.

- a. Tissue
- b. Organ
- c. Molecules
- d. Compounds
- e. Organism

Ans: A

Difficulty: easy

Feedback: 1.2

3. Using your fingers to find your pulse on your wrist is an example of

- a. Auscultation
- b. Palpation
- c. Responsiveness
- d. Gross anatomy
- e. Physiologist

Ans: B

Difficulty: medium

Feedback: 1.2

4. Percussion techniques can be used to determine
- a. Heart beats
  - b. Pulse rate
  - c. Amplify sounds
  - d. Fluid in the lungs
  - e. Enlarged organs

Ans: D

Difficulty: medium

Feedback: 1.2

5. This is the sum of all cellular processes that occur in the body.
- a. Metabolism
  - b. Anabolism
  - c. Catabolism
  - d. Auscultation
  - e. Palpation

Ans: A

Difficulty: hard

Feedback: 1.3

6. List the basic processes of life.

Ans: The basic processes of life include metabolism, responsiveness, movement, growth, differentiation and reproduction.

Difficulty: medium

Feedback: 1.3

7. This is the regulation of body conditions within normal limits.
- a. Palpation
  - b. Percussion
  - c. Homeostasis
  - d. Autopsy
  - e. Histology

Ans: C

Difficulty: easy

Feedback: 1.4

8. The systems that provide homeostasis are:
- a. Cardiovascular and Integumentary
  - b. Nervous system and Endocrine
  - c. Cardiovascular and respiratory systems
  - d. Respiratory and muscular systems
  - e. Urinary and integumentary systems

Ans: B

Difficulty: easy

Feedback: 1.4

9. This body fluid directly affects the proper functioning of cells.
- a. Lymph
  - b. Blood
  - c. Interstitial fluid
  - d. Aqueous humor
  - e. Vitreous body

Ans: C

Difficulty: medium

Feedback: 1.4

10. Name the differences between a positive and a negative feedback system.

Ans: A positive feedback system will strengthen or reinforce a change in one of the body's controlled conditions while a negative feedback system will reverse a change in a controlled condition.

Difficulty: medium

Feedback: 1.4

11. This is the structure of a feedback system that receives output from the control center.
- a. Receptor
  - b. Body fluids
  - c. Brain
  - d. Effector
  - e. Afferent

Ans: D  
Difficulty: medium  
Feedback: 1.4

12. This is the structure of a feedback system that provides input to the control center.
- a. Receptor
  - b. Muscle
  - c. Brain
  - d. Effector
  - e. Efferent

Ans: A  
Difficulty: medium  
Feedback: 1.4

13. A condition NOT regulated by a negative feedback loop would be:
- a. Childbirth
  - b. Body temperature
  - c. Blood pressure
  - d. Heart rate
  - e. Blood sugar

Ans: A  
Difficulty: medium  
Feedback: 1.4

14. This is a change in body function that can be measured objectively.
- a. Symptom
  - b. Disorder
  - c. Disturbance
  - d. Disease
  - e. Sign

Ans: E  
Difficulty: medium  
Feedback: 1.4

## Essay

15. Describe the anatomical position.

Ans: In the anatomical position the subject stands erect facing the observer with the head level and the eyes facing forward. The feet are flat on the floor and directed forward and the arms are at the sides with the palms turned forward.

Difficulty: medium

Feedback: 1.5

## Multiple Choice

16. In which cavity is the brain located?

- a. Cranial cavity
- b. Vertebral cavity
- c. Abdominal cavity
- d. Pericardial cavity
- e. Pleural cavity

Ans: A

Difficulty: Easy

Feedback: 1.5

17. In which cavity are the lungs located?

- a. Cranial cavity
- b. Vertebral cavity
- c. Abdominal cavity
- d. Pericardial cavity
- e. Pleural cavity

Ans: E

Difficulty: Easy

Feedback: 1.5

18. In which cavity is the stomach located?

- a. Cranial cavity