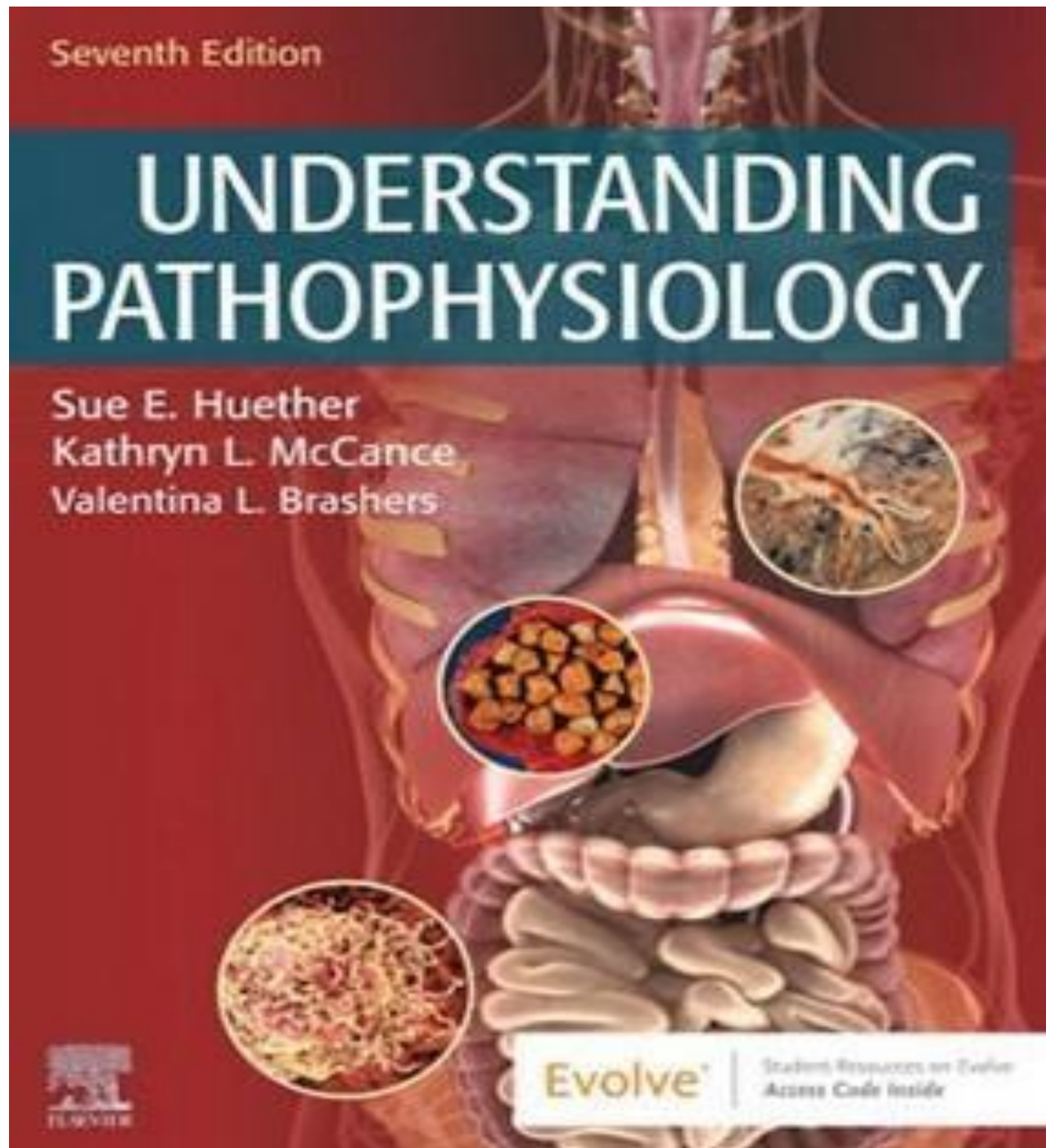


TEST BANK



Test Bank for Pathophysiology 7th Edition by McCance

TABLE OF CONTENT

Unit 1: The Cell

1. Cellular Biology
2. Genes and Genetic Diseases
3. Epigenetics and Disease
4. Altered Cellular and Tissue Biology
5. Fluids and Electrolytes, Acids and Bases

Unit 2: Mechanisms of Self-Defense

6. Innate Immunity: Inflammation and Wound Healing
7. Adaptive Immunity
8. Alterations in Immunity
9. Infection and Defects in Mechanisms of Defense
10. Stress and Disease

Unit 3: Cellular Proliferation: Cancer

11. Biology of Cancer
12. Cancer Epidemiology
13. Cancer in Children and Adolescents

PART TWO: BODY SYSTEMS AND DISEASES

Unit 4: The Neurologic System

14. Structure and Function of the Neurologic System

- 15. Pain, Temperature, Sleep, and Sensory Function
- 16. Alterations in Cognitive Systems, Cerebral Hemodynamics, and Motor Function
- 17. Disorders of the Central and Peripheral Nervous Systems and Neuromuscular Junction
- 18. Alterations of Neurologic Function in Children

Unit 5: The Endocrine System

- 19. Mechanisms of Hormonal Regulation
- 20. Alterations of Hormonal Regulation
- 21. Obesity and Disorders of Nutrition *NEW***

Unit 6: The Hematologic System

- 22. Structure and Function of the Hematologic System
- 23. Alterations of Hematologic Function
- 24. Alterations of Hematologic Function in Children

Unit 7: The Cardiovascular and Lymphatic Systems

- 25. Structure and Function of the Cardiovascular and Lymphatic Systems
- 26. Alterations of Cardiovascular Function
- 27. Alterations of Cardiovascular Function in Children

Unit 8: The Pulmonary System

- 28. Structure and Function of the Pulmonary System
- 29. Alterations of Pulmonary Function
- 30. Alterations of Pulmonary Function in Children

Unit 9: The Renal and Urologic Systems

- 31. Structure and Function of the Renal and Urologic Systems

32. Alterations of Renal and Urinary Tract Function

33. Alterations of Renal and Urinary Tract Function in Children

Unit 10: The Reproductive Systems

34. Structure and Function of the Reproductive Systems

35. Alterations of the Female Reproductive System

36. Alterations of the Male Reproductive System

Unit 11: The Digestive System

37. Structure and Function of the Digestive System

38. Alterations of Digestive Function

39. Alterations of Digestive Function in Children

Unit 12: The Musculoskeletal and Integumentary Systems

40. Structure and Function of the Musculoskeletal System

41. Alterations of Musculoskeletal Function

42. Alterations of Musculoskeletal Function in Children

43. Structure, Function, and Disorders of the Integument

44. Alterations of the Integument in Children

Understanding Pathophysiology 7th Edition Test Bank

Chapter 1. Cellular Biology

MULTIPLE CHOICE

1. A student is observing a cell under the microscope. It is observed to have supercoiled DNA with histones. Which of the following would also be observed by the student?

- a. A single circular chromosome
- b. A nucleus
- c. Free-floating nuclear material
- d. No organelles

ANS: B

The cell described is a eukaryotic cell, so it has histones and a supercoiled DNA within its nucleus; thus, the nucleus should be observed.

A single circular chromosome is characteristic of prokaryotic cells, which do not have histones.

Free-floating nuclear material describes a prokaryotic cell, which would not have a distinct nucleus.

Eukaryotic cells have membrane bounded cellular components called organelles. No organelles describes a prokaryotic cell.

2. A nurse is instructing the staff about cellular functions. Which cellular function is the nurse describing when an isolated cell absorbs oxygen and uses it to transform nutrients to energy?

- a. Metabolic absorption
- b. Communication
- c. Secretion
- d. Respiration

ANS: D

The ability of the cell to absorb oxygen refers to the cells function of respiration.

The ability of the cell to function within a society of cells refers to its function of communication.

The ability of the cell to take in nutrients refers to the cells function of metabolic absorption.

The ability of the cell to synthesize new substances and secrete these elsewhere refers to the cells function of secretion.

3. A eukaryotic cell is undergoing DNA replication. In which region of the cell would most of the genetic information be contained?

- a. Mitochondria
- b. Ribosome
- c. Nucleolus
- d. Nucleus

ANS: C

The region of the cell that contains genetic material, including a large amount of ribonucleic acid, most of the DNA, and DNA-binding proteins, is the nucleolus.

The mitochondria is the site of cellular respiration.

The ribosomes are involved in manufacturing of proteins within the cell.

The nucleus contains the nucleolus, and it is the nucleolus that contains genetic material.

4. The fluid mosaic model for biologic membranes describes membrane behavior. According to this model, which of the following float singly or as aggregates in the fluid lipid bilayer?

- a. Peripheral membrane proteins
- b. Integral membrane proteins

- c. Glycoproteins
- d. Cell adhesion molecules

ANS: B

Integral membrane proteins float freely in the fluid lipid bilayer.

Peripheral membrane proteins are not embedded in the layer, but reside at the surface.

Glycoproteins act as cell surface markers.

Cell adhesion molecules are on the outside of the membrane and allow cells to hook together.

5. Which of the following can bind to plasma membrane receptors?

- a. Oxygen
- b. Ribosomes
- c. Amphipathic lipids
- d. Ligands

ANS: D

Ligands are specific molecules that can bind with receptors on the cell membrane.

Oxygen moves by diffusion; it does not bind to receptors.

Ribosomes make proteins and are not involved in binding.

Amphipathic lipids are a portion of the cell membrane.

6. A nurse is reviewing a report from a patient with metastatic cancer. What finding would support the diagnosis of metastatic cancer? Alterations in extracellular matrix that include:

- a. Decreased fibronectin
- b. Increased collagen
- c. Decreased elastin